

**7<sup>TH</sup> & 8<sup>TH</sup> GRADE  
LMMS SCHEDULING  
INFORMATION**

**WELCOME TO LMMS FOR THE  
2024-2025 SCHOOL YEAR!**

# LMMS IMPORTANT DATES

Students will schedule elective classes using a Google form posted in their math course in Schoology.

All core classes will be scheduled by the school counselors.

## 7<sup>th</sup> Grade Scheduling

- Friday March 22nd grade students will meet with Mrs. Copeland
- Crawford/Parsell/Copley/Whitaker/Phelps-Bradbury/Baldwin - 7:20-8:20 AM
- Dipzinski/Allen/Huecker/Lape/Dillion/Stein- 8:30-9:30 AM
- Collinsworth/Barnett/Smolzer/McWhorter/Hounshell - 10:35-11:35 AM

Friday March 29th- Electronic scheduling responses are due.

Students are encouraged to complete as soon as possible.

## 8<sup>th</sup> Grade Scheduling

- Friday May 5th- 7<sup>th</sup> graders will meet with Mrs Wall.
- Saturday May 13th- Electronic scheduling responses are due. Students are encouraged to complete as soon as possible.

# LMMS DAILY SCHEDULE

<b>Period 1</b>	7:20 - 8:04
<b>Period 2</b>	8:08 - 8:51
<b>Period 3</b>	8:55 - 9:38
<b>ETEH 7/8</b>	9:41-10:08
<b>Period 4</b>	10:11-10:55
<b>Period 5</b>	10:57-12:26 Lunch C (7th grade) - 10:57-11:27 Lunch D (7/8 Grade) - 11:27-11:57 Lunch E (8th Grade) - 11:56-12:26
<b>Period 6</b>	12:28-1:12
<b>Period 7</b>	1:16-2:00

**\*Student drop off begins at 6:45 a.m.**  
**\*Car Riders and bus dismissal at 2:00 p.m.**

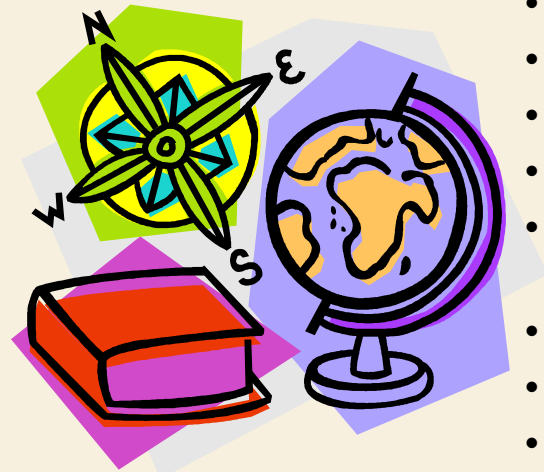
# LMMS SCHEDULING RESOURCES

- ❑ Google form posted through math course in Schoology
- ❑ Go to LMMS homepage on the Little Miami website- click on the scheduling link on the left side of the page.
- ❑ Scheduling Resources on Schoology and the LMMS homepage include:
  - ✓ 2024-2025 Course Description Guide
  - ✓ Welcome to LMMS 2024-2025 Scheduling PowerPoint
  - ✓ AFJROTC Flyers
  - ✓ Foreign Language Flyer

# 7<sup>TH</sup> AND 8<sup>TH</sup> GRADE STUDENT CLASSES

## 4 Core Classes

- Language Arts
- Mathematics
- Science
- Social Studies



## Electives (2 year long, 1 yr. long and 2 semester or 4 semester classes)

- Gateway (STEM)
- Keyboarding
- Service Learning
- Physical Education/Health
- Sports and Fitness
- Art
- General Music-Ukulele
- General Music-Percussion Ensemble
- Band (Year-long)
- Women's Choir (Year-long)
- Men's Choir (Year-long)
- Apps Creator (Pre-requisite Gateway)
- Flight & Space (Pre-requisite Gateway)
- Advanced Robotics (8th grade ONLY w/teacher recommendation)
- Computer Application (8<sup>th</sup> Grade ONLY)
- Foreign Language-Spanish and French (8<sup>th</sup> Grade ONLY)
- AFJROTC (8<sup>th</sup> Grade ONLY)
- Math Lab will be scheduled using teacher recommendation and test scores (will replace a semester elective)

# 7<sup>TH</sup> GRADE REQUIRED ELECTIVES

**Keyboarding Course Description:** This Keyboarding course is designed for middle school students to master the skill of entering alphabetic, numeric, and symbolic information on a keyboard and a ten-key pad using the touch method of key stroking. Emphasis is placed on development of accuracy and speed, proper techniques, and correct finger positions. Students will further develop and enhance touch skills for entering information using a keyboard to compose and produce personal, educational, and professional documents. Digital literacy, composition, and language skills are embedded throughout the course.

# 8<sup>TH</sup> GRADE REQUIRED ELECTIVES

**Computer Applications Course Description:**

A semester long introductory course in personal computers using Microsoft Windows and Office Suite applications. The students will receive hands on experience in MS Windows, Word, Excel, PowerPoint, Office 365, OneDrive, Outlook, and other programs.

# FOREIGN LANGUAGE-BIG CHANGES!!

- For the 2024-25 school year there will be 6 sections of Spanish and 3 sections of French.
- Foreign Language is only available for 8th grade students to take (rising 7th graders make sure to keep all criteria in mind as you complete your 7th grade year)
- To be eligible to take foreign language for High School Credit, you must have A's and B's in core classes during your 7th grade year.
- Classes filled by GPA.
- Students with a 4.0 get priority.
- Which language should I take? Take time to read the foreign language flyer posted on the LMMS website scheduling tab.

# THINGS TO REMEMBER WHEN SCHEDULING

- The Google Form is ONLY for electives
- If you do not submit a form, we will have to pick classes for you and we want YOU to be able to choose!
- We will do our best to give you all your requests, however, conflicts and class caps can limit those options
- Core classes will be scheduled by your counselor
- Your class schedule will be posted to progress book prior to Open House



**IF YOU HAVE QUESTIONS, PLEASE CONTACT  
YOUR SCHOOL COUNSELOR**

**School Year 2024-25**

**8th Grade**

Andrea Wall [awall@lmsdoh.org](mailto:awall@lmsdoh.org)

**7th Grade**

Stacey Copeland [scopeland@lmsdoh.org](mailto:scopeland@lmsdoh.org)